



PALI CAMPION srl

Via A. De Gasperi, 45 • 45025 Fratta Polesine (RO) • Italy
tel + 39 0425 668686 • fax +39 0425 668688
www.palicampion.it • mail@palicampion.it • pec@pec.palicampion.it



www.palicampion.it – Assembling-use-maintenance COLLAPSIBLE COLUMNS – rev130616 – Pag. 1 di 9

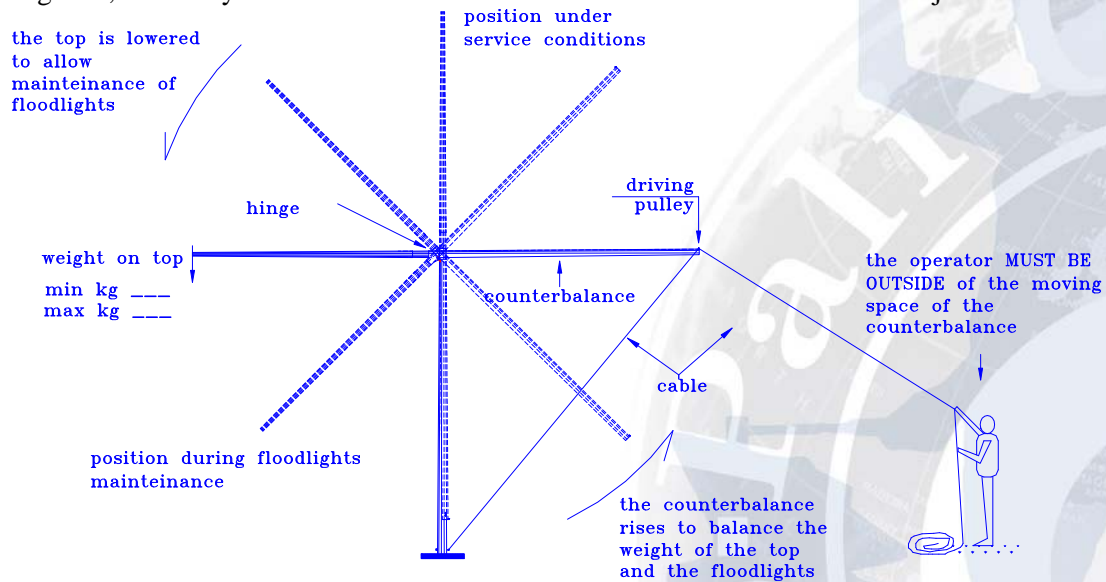
INSTALLATION. USE AND MAINTENANCE INSTRUCTIONS FOR COLLAPSIBLE COLUMNS WITH HAND BALANCED SYSTEM

FOREWORD

This documents contains the installation use and maintenance istructions for collapsible columns with hand balances system **IN ADDITION TO THESE INSTRUCTION YOU ALWAYS NEED TO REFER TO THE WORKSHOP DRAWINGS GIVE AT ORDER STEP WHICH MAY CONTAIN FURTHER INFORMATION REFERRED TO PARTICULAR CASES**

DESCRIPTION OF THE PRODUCT

Collapsible columns with hand balanced system are mainly composed of a fixed part (shaft) and a mobile part (top part + counterbalance) which turns around an hinge; the movement can be carried out without any effort and danger provided that the minimum and maximum weight mentioned on a fixed label are respected. the movement is due to the gravity balanced between the weight of the floodlights on one side and the weight of the counterbalance on the other; The operator has just to control following the movement with the rope. Under normal conditions, that is with the column in vertical position, the mobile is rigidly locked to the fixed part granting thus, the safety of the structure under the load conditions to which it is subjected.



!!! WARNING !!!

IT IS VERY IMPORTANT TO RESPECT THE MINIMUM AND MAXIMUM WIEGHT (MIN E "MAX.") MENTIONED ON THE LABEL FIXED ON THE COLUMN. . IF THIS LIMITS ARE NOT RESPECTED, WE DO NOT GRANT THE GOOD WORKING OF THE COLUMN, RELIEVING US FROM ANY RESPONSIBILITY FOR DAMAGES CAUSED TO GOODS AND/OR PERSONS ARISING FROM THE USE/MOVEMENT OF THE COLUMN ITSELF .





PALI CAMPION srl

Via A. De Gasperi, 45 • 45025 Fratta Polesine (RO) • Italy
tel + 39 0425 668686 • fax +39 0425 668688
www.palicampion.it • mail@palicampion.it • pec@pec.palicampion.it



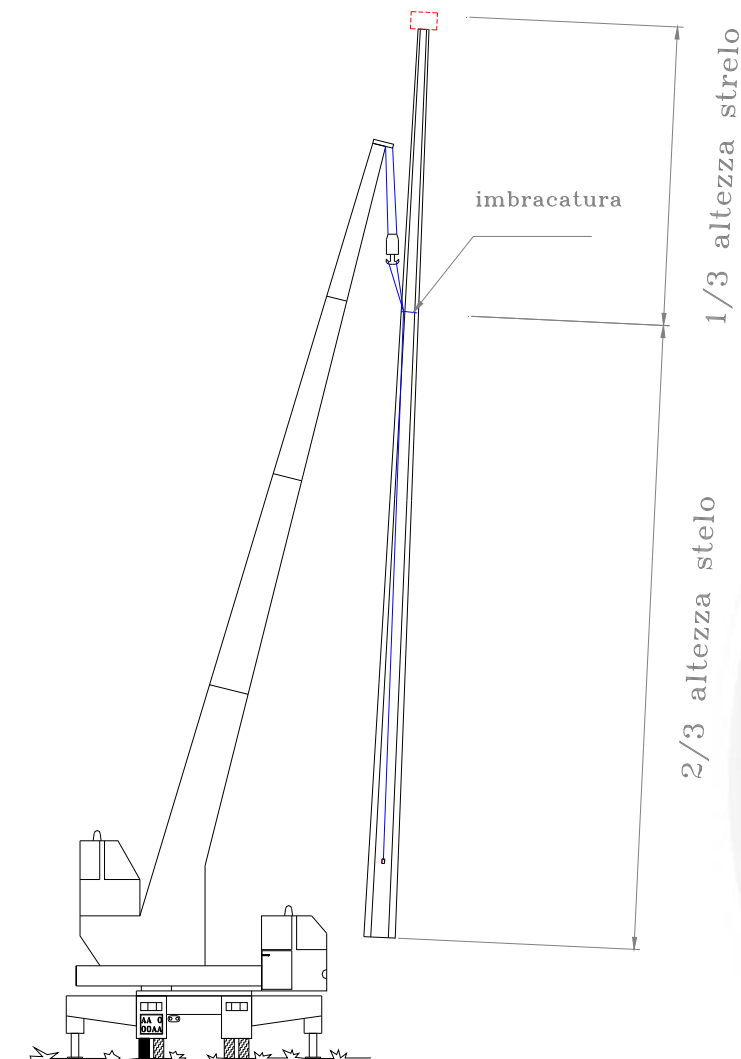
www.palicampion.it – Assembling-use-maintenance COLLAPSIBLE COLUMNS – rev130616 – Pag. 2 di 9

INSTALLATION OF THE COLUMN

The collapsible columns are usually supplied already assembled and ready to be lifted; In case the top of the columns is in two section it is necessary to insert the top into the socket of the counterbalance up to refusal (*see instructions for overlapping polygonal elements*). It is important that the overlapping is done up to refusal because, if not so, during the collapsing the top part may slip out of the socket of the counterbalance with consequent danger for the person in charge of the movement.

The lifting should be done employing crane with suitable carriage load, securing the column with a sling at about 2/3 of its height.

NOTE: Before lifting the column it is preferred to install the floodlights and cables on top



Secure the column with a sling (at around 2/3 of its height) taking care of inserting into the sling itself a steel cable of which the free end will be fixed to the base of the shaft. The steel cable will prevent the sling to raise (due to the conicity of the shaft).

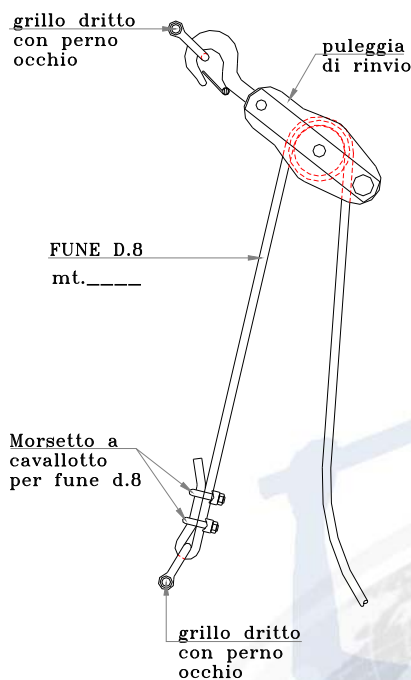
N.B.: For safety reason it is good that around the crane there is only authorized personnel and device needed to assemble the good the collapsible columns.

As far as the way of fixing the columns to the plinth see *instructions for anchoring the column to the foundation block.*

USE INSTRUCTIONS

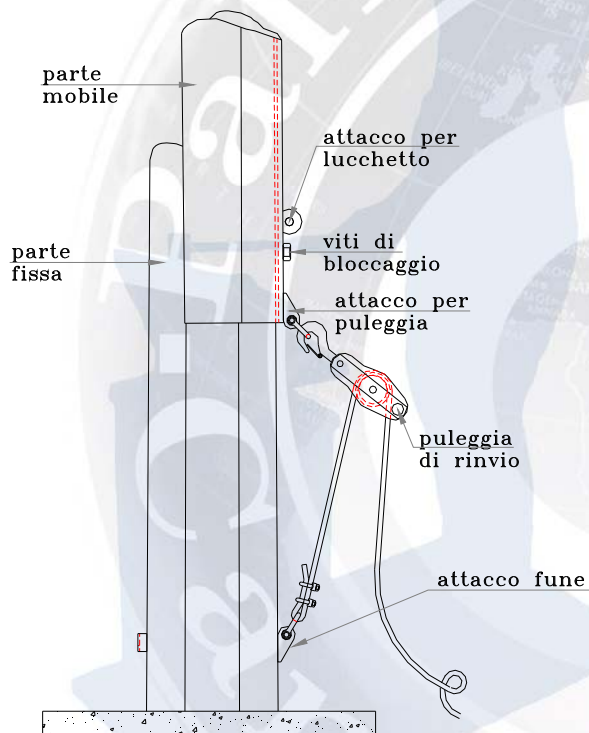
In order to move the collapsible column we will give You the moving set composed of:

- N.1 rope $\varnothing 8$ of suitable length
- N.1 driving pulley
- N.2 straight clevis
- N.2 “U” clamps for cable $\varnothing 8$



Hooking of the cable and pulley

1. Hook the end of cable on the purpose made ring on the fixed part of the column
2. Hook the driving pulley on the connection provided in the counterbalance (mobile part)





PALI CAMPION srl

Via A. De Gasperi, 45 • 45025 Fratta Polesine (RO) • Italy
tel + 39 0425 668686 • fax +39 0425 668688
www.palicampion.it • mail@palicampion.it • pec@pec.palicampion.it

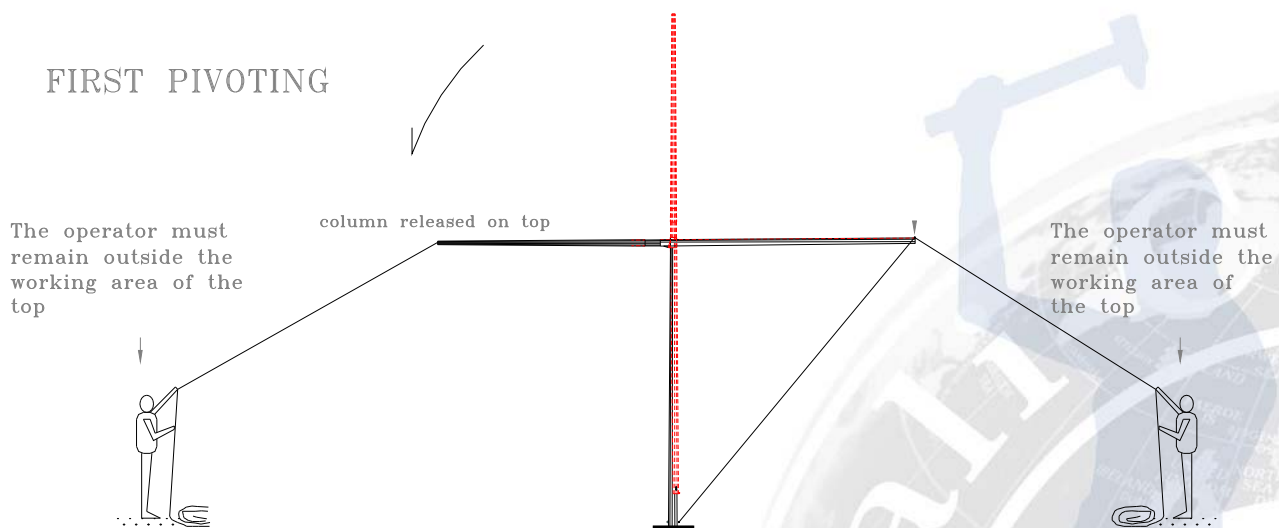


www.palicampion.it – Assembling-use-maintenance COLLAPSIBLE COLUMNS – rev130616 – Pag. 4 di 9

Lowering

1. Loose and take out the screw/s keeping the cable under tensions
2. Move lighting upwards the mobile part keeping the cable under tension
3. Follow the movement slowing it with the rope until the column is collapsed

NOTA: the collapsing of the column must be done with the floodlights installed (in fact the movement is done without effort of the operator thanks to the balance between the weights of the top and the loads on top and the weight of the counterbalance) ; if it is not possible to install the floodlights before lifting and leveling the mast (therefore with the column released on top) it is good to fix a cable on top so that You can help the column during the first movement.



Raising

1. Acting on the rope, pull the mobile bracket downwards. Slow down at the end, and follow it, if any, until the mobile bracket is laid on the fixed part
2. Screw the rope and lock them always keeping the cable under tension
3. Take out the cable and the driving pulley
4. togliere la fune e la puleggia



PALI CAMPION srl

Via A. De Gasperi, 45 • 45025 Fratta Polesine (RO) • Italy
tel + 39 0425 668686 • fax +39 0425 668688
www.palicampion.it • mail@palicampion.it • pec@pec.palicampion.it



www.palicampion.it – Assembling-use-maintenance COLLAPSIBLE COLUMNS – rev130616 – Pag. 5 di 9

SAFETY WARNING

- Make sure that the weight of the fixture mounted on top is within the limits mentioned and quoted on the label fixed to the column
- Make the operation, keeping outside the working area of the counterbalance absolutely avoiding side pulling which may damage the counterbalance itself
- Avoid the movement with Wind
- Avoid strokes during the operation since they may damage either the columns and the floodlights
- Do not stay under the bracket, preventing the approach of people not involved in the moving operation
- The operator in charge of the movement must be aware of the use and warning instructions



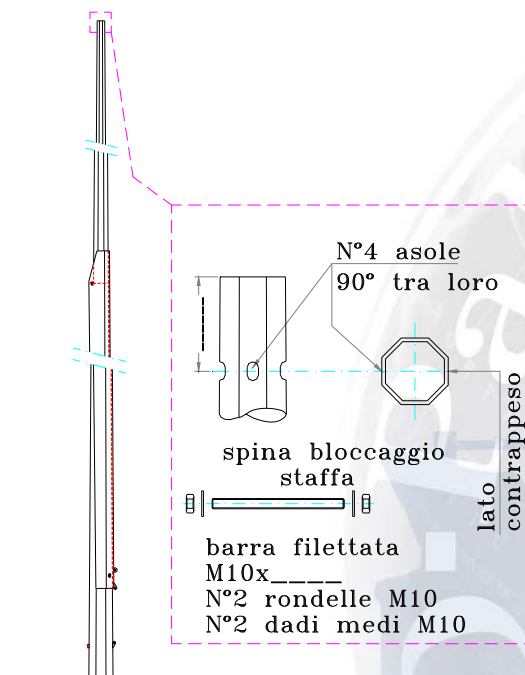
MAINTENANCE

It is very important that the maintenance is done by qualified operator. Before proceeding to the movement of the top it is necessary to verify the conditions of the cable and driving pulleys. For safety reason You have to avoid the use of poorly preserved cords, worn or frayed.

The maintenance and checking operation will be registered in the “MAINTENANCE REGISTER” enclosed to this manual

Operation that must be done during maintenance :

- Verification of the wiring connection
- Verification of the wiring connection at the base (junction box)
- Verification of the “U” clamp of the cable (to be done before pivoting the column)
- (COLUMN WITH BASE PLATE) Verification of the bolts and the base plate
- (WHEN THE TOP IS LOWERED) verification of the locking bolts and the floodlights



- Verification of the columns conditions and of the zinc coating



PALI CAMPION srl

Via A. De Gasperi, 45 • 45025 Fratta Polesine (RO) • Italy
tel + 39 0425 668686 • fax +39 0425 668688
www.palicampion.it • mail@palicampion.it • pec@pec.palicampion.it



www.palicampion.it – Assembling-use-maintenance COLLAPSIBLE COLUMNS – rev130616 – Pag. 9 di 9

NOTICE

The civil and criminal liability in case of accident or damage caused by a failure on maintenance of the roads or its accessories (among the we can find the hypothesis of a lighting plant) will be in charge of the owner of them .

Especially as far as the criminal liability is concern, i twill be in charge of the person that, at the moment of the accident, will be recognised as holder of the legal duty to grant the perfect maintenance of the above plant.

In order to clarify better, in case of accident caused by a lack of ,or to a bad maintenance of the high mast located in centre of a town, the legally liable person will be identified by the legal representative of the municipality , because he is owner and responsible of the above mentioned structure.

Criminal Responsibility

The art. 35 paragraph 4 of D.Lgs. 626/94, provides that: “the employer implements and organise the suitable technical measures in order to reduce to the minimum the risk connected to the use of the devices so that they are:

- a) installed according to the manufacturer’s instructions;
- b) properly employed ;
- c) they are subjected to a suitable maintenance in order to grant, with the time being,, that they comply to the safety requests ”.

Failure to comply with the obligations imposed by the above standards, exposes the owner of the high mast to the risk of application of penalties, as expressly provided for by art. 89 D.Lgs. 626/94

Furthermore according to art. 589 e 590 C.P , the owner of the lighting plants with high masts, may be considered criminal liable, in case that he is not able to prove that he has duly carried out the checking and surveillance on the plants of his property, having put in act all actions and measures at his disposal, to keep the plant in good conditions, carrying out regular maintenance

Civil liability

Art. 2043 C.C. contents the principle that " any intentional or negligent did, which causes unjust damage to others, obliges the one who committed it to pay damages ", underlying that the fact which is source of this responsibility may also consist of an omission

It is also established by the following articles of the Civil Code:

- art.1669 “The manufacturer is liable for damaged to others caused by sever defects of workmanship , for a period of 10 years from the date of manufacturing”
- art. 2050 "Anyone who cause a damage to others during an activity which is dangerous itself or it is dangerous because of the means used for it, is liable to pay damages unless he can prove which he has undertaken all the steps to avoid the damage”;
- art.2051 "each one is responsible for the damage caused by things under is care unless he can prove that it was and accidental event ”;
- art.2053 "The owner of a building or other constructions is liable of damages caused by their decay unless he can prove that it is not due to a lack of maintenance or manufacturing defect ”.

In case of accident, the owner must provide evidence that he has organised all the activities taking all the precautions that seemed suitable to avoid the damage, give evidence that the damage occurred was unpredictable , and consequently he has to identify the cause of the damage or the proof that the responsibility of the damage itself can be in charge of others persons.